

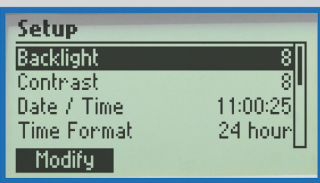
HI 83200 2008 Series

# Multiparameter Photometer

Measure up to 45 Parameters

**ADP**  
 Application Designed Photometers

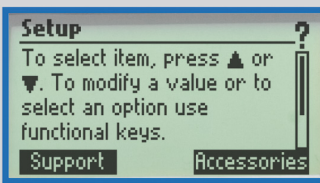

HI 83200 Multiparameter Photometer



## Setup Button

Instrument preferences such as backlight intensity and screen contrast can be changed via the setup button.

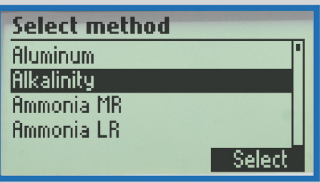
HI 83200 Multiparameter Photometer



## HELP Button

Screen specific help can be viewed at the touch of a button.

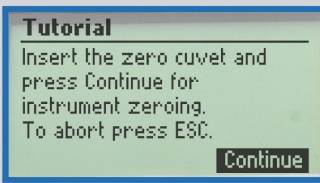
HI 83200 Multiparameter Photometer



## Method Selection

Users can easily select parameters via the Method button.

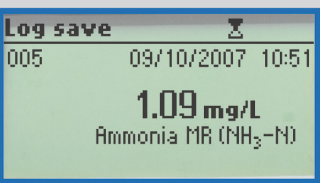
HI 83200 Multiparameter Photometer



## On-screen Tutorial

With the tutorial function enabled, short guides relating to current operation are displayed.

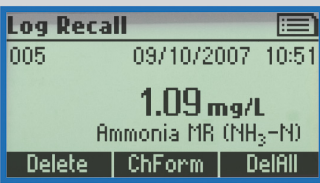
HI 83200 Multiparameter Photometer



## Save and Recall Logged Data at the Touch of a Button

Simply touching the LOG button users can save readings into memory. Pressing the RCL button brings back logged information for viewing on-screen. The logged information can later be transferred to a PC using the HI 92000 Windows® compatible software for further study.

HI 83200 Multiparameter Photometer



## Extended Parameter Set and Feature Rich

HI 83200 2008 Series is a multiparameter bench colorimeter dedicated for laboratory analysis. It can measure up to 45 methods using specific liquid or powder reagents. The amount of reagent is precisely dosed to ensure maximum repeatability.

The 2008 Series of the HI 83200 benchtop photometer from HANNA offers all the features from our previous popular series plus many upgrades and improvements that make these instruments much more versatile and easy to use.

These instruments have been completely redesigned to accommodate more sophisticated optical systems, resulting in greater reproducibility of tests. These new casings feature a cuvette compartment door that eliminate external light disturbances.

The 2008 Series also feature a graphic, backlit LCD which greatly enhances user friendliness. The method selection and set up modes are clearly shown on the LCD. Each method's measuring procedure is displayed on the LCD taking the user step by step through the process. At any stage in the measurement process or during setup, the help button will show context sensitive help. All these features are available in a user selectable language. Additionally, the help screen also list the required reagent sets, accessories and customer support contact information.

The 2008 Series eliminates confusion by automatically converting readings to other chemical forms. Common conversions are available at the touch of a button.

Other features included in the 2008 Series are a USB connection to transfer logged data (the instruments allow up to 200 data points) and the capability to run on rechargeable batteries or a 12 Vdc power adapter (included).

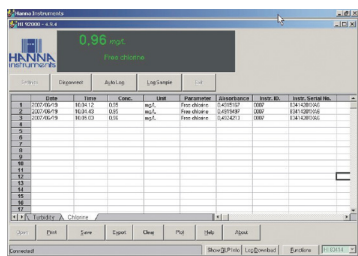
- Log and recall data at a push of a button
- Light blocking cuvet holder
- Backlit LCD
- Batter Error Prevention System (BEPS)
- PC compatible via USB
- On-screen tutorial and context sensitive help screens
- Powered by rechargeable batteries or 12 VDC

# HI 83200 2008 Series Multiparameter Photometer

Measure up to 45 Parameters

9

PHOTOMETERS



## Data Management

Data can be managed using the HI 92000 Windows® compatible software.



## Cuvet Holder with Door

The HI 83200 2008 Series' cuvet cover aids in stopping stray light from effecting measurements.

## ORDERING INFORMATION

**HI 83200-01** 2008 series (115V) and **HI 83200-02** 2008 series (230V) are supplied with cuvettes (4), bottle for DO test, 12 Vdc adapter and instruction manual.

**HI 83200C-01** 2008 series (115V) and **HI 83200C-02** 2008 series (230V) are supplied with a rugged carrying case, cuvettes (4), bottle for DO tests, cuvette cleaning cloths (4), 12 VDC adapter, and an instruction manual.

## ACCESSORIES

- HI 721310** 9V battery (10 pcs)
- HI 731318** Tissue for wiping cuvetts (4 pcs)
- HI 731321** Glass cuvetts (4 pcs)
- HI 731325N** New cap for cuvet (4 pcs)
- HI 740034** Cap for 100 mL beaker (6 pcs)
- HI 740036** 100 mL plastic beaker (6 pcs)
- HI 740038** 60 mL glass bottle and stopper
- HI 740142** 1 mL graduated syringe
- HI 740143** 1 mL graduated syringe (6 pcs)
- HI 740144** Pipette tip (6 pcs)
- HI 740157** Plastic pipette (20 pcs)
- HI 740220** 25 mL glass cylinder with cap (2 pcs)
- HI 740223** 170 mL plastic beaker
- HI 740224** 170 mL plastic beaker (12 pcs)
- HI 740225** 60 mL graduated syringe
- HI 740226** 5 mL graduated syringe
- HI 740227** Filter assembly
- HI 740228** Filter disc (25 pcs)
- HI 740229** 100 mL Polypropylene cylinder
- HI 740230** 230 mL Demineralized water
- HI 92000** Windows® Compatible Software
- HI 920010** PC connection cable
- HI 93703-50** Cuvets cleaning solution (230 mL)
- HI 93703-54** Dried resin (100 g)
- HI 93703-55** Activated Carbon (50 pcs)

## SPECIFICATIONS

Light Source	4 tungsten lamps with narrow band interference filters at 420/525/575/610 nm
Light Detector	4 Silicon Photocells
Power Supply	built-in rechargeable batteries or 12 Vdc adapter
Auto-off	after 10 minutes of non-use
Logging	200 data points
Computer Interface	USB
Environment	0 to 50°C (32 to 122°F); RH max 90% non-condensing
Dimensions	230 x 200 x 110 mm (9 x 7.9 x 4.3")
Weight	900 g (32 oz.)

TEST	RANGE	METHOD	REAGENT CODE
Aluminum	0.00 to 1.00 mg/L	Aluminon	HI 93712-01
Alkalinity	0 to 500 mg/L	Colorimetric	HI 93755-01
Ammonia MR	0.00 to 10.00 mg/L	Nessler	HI 93715-01
Ammonia LR	0.00 to 3.00 mg/L	Nessler	HI 93700-01
Bromine	0.00 to 8.00 mg/L	DPD	HI 93716-01
Calcium	0 to 400 mg/L	Oxalate	HI 937521-01**
Chlorine Dioxide	0.00 to 2.00 mg/L	Chlorophenol Red	HI 93738-01
Chlorine*, Free	0.00 to 2.50 mg/L	DPD	HI 93701-01
Chlorine*, Total	0.00 to 3.50 mg/L	DPD	HI 93711-01
Chromium VI HR	0 to 1000 µg/L	Diphenylcarbohydrazide	HI 93723-01
Chromium VI LR	0 to 300 µg/L	Diphenylcarbohydrazide	HI 93749-01
Color	0 to 500 PCU	Colorimetric Platinum Cobalt	—
Copper HR	0.00 to 5.00 mg/L	Bicinchoninate	HI 93702-01
Copper LR	0 to 1000 µg/L	Bicinchoninate	HI 95747-01
Cyanide	0.000 to 0.200 mg/L	Pyridine-Pyrazalone	HI 93714-01
Cyanuric Acid	0 to 80 mg/L	Turbidimetric	HI 93722-01
Fluoride	0.00 to 2.00 mg/L	SPADNS	HI 93729-01
Hardness (calcium)	0.00 to 2.70 mg/L	Colorimetric	HI 93720-01
Hardness (magnesium)	0.00 to 2.00 mg/L	Colorimetric	HI 93719-01
Hydrazine	0 to 400 µg/L	p-Dimethylaminobenzaldehyde	HI 93704-01
Iodine	0.0 to 12.5 mg/L	DPD	HI 93718-01
Iron HR	0.00 to 5.00 mg/L	Phenantroline	HI 93721-01
Iron LR	0 to 400 µg/L	TPTZ	HI 93746-01**
Magnesium	0 to 150 mg/L	Calmagite	HI 937520-01**
Manganese HR	0.0 to 20.0 mg/L	Periodate Oxidation	HI 93709-01
Manganese LR	0 to 300 µg/L	PAN	HI 93748-01**
Molybdenum	0.0 to 40.0 mg/L	Mercaptoacetic Acid	HI 93730-01
Nickel HR	0.00 to 7.00 g/L	Photometric	HI 93726-01
Nickel LR	0.000 mg/L to 1.000 mg/L	PAN	HI 93740-01**
Nitrate	0.0 to 30.0 mg/L	Cadmium Reduction	HI 93728-01
Nitrite HR	0 to 150 mg/L	Ferrous Sulfate	HI 93708-01
Nitrite LR	0.00 to 0.35 mg/L	Diazotization	HI 93707-01
Oxygen, Dissolved (DO)	0.0 to 10.0 mg/L	Winkler	HI 93732-01
Ozone	0.00 to 2.00 mg/L	DPD	HI 93757-01
pH	6.5 to 8.5 pH	Phenol Red	HI 93710-01
Phosphate HR	0.0 to 30.0 mg/L	Amino Acid	HI 93717-01
Phosphate LR	0.00 to 2.50 mg/L	Ascorbic Acid	HI 93713-01
Phosphorus	0.0 to 15.0 mg/L	Amino Acid	HI 93706-01
Potassium HR	20 to 200 mg/L	Turbidimetric Tetraphenylborate	HI 93750-01
Potassium MR	10 to 100 mg/L	Turbidimetric Tetraphenylborate	HI 93750-01
Potassium LR	0.0 to 20.0 mg/L	Turbidimetric Tetraphenylborate	HI 93750-01
Silica	0.00 to 2.00 mg/L	Heteropoly blue	HI 93705-01
Silver	0.000 to 1.000 mg/L	PAN	HI 93737-01**
Sulfate	0 to 150 mg/L	Turbidimetric	HI 93751-01
Zinc	0.00 to 3.00 mg/L	Zincon	HI 93731-01

All reagents with -01 final code are for 100 tests unless noted otherwise.

\* For Chlorine, liquid reagents are available.

\*\* Reagents for 50 tests