

HI 142 and HI 504903

Required temperature monitoring and control is becoming more prevalent in the food industry, catering and super-markets.

Several regulations also dictate a hard copy of the measured temperatures from production to the consumer.

For this reason many instruments have been produced for continuous temperature monitoring, but all of them have to be removed from their location for data downloading. Now, thanks to advanced technology from HANNA instruments' HI 142 and HI 504903, this is no longer a problem.

HI 142, available in 8 models with different temperature ranges, allows data downloading directly on the PC.

You can interact with the loggers directly from your PC, perform set-up, check instrument status and download the data when the logging is complete.

A Complete System for Temperature Monitoring

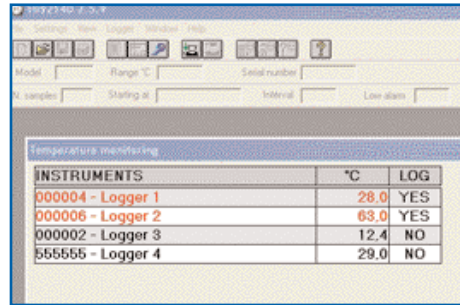
You can choose between two connection types: direct connection between PC and HI 142/HI 504903 system, or modem connection which allows supervision of the loggers from a distance of several kilometers.

It is possible to build a control network with up to 31 loggers, each one can log up to 7600 data or work in a cyclical fashion.

If an error occurs in one or more loggers, e.g. measured temperature is outside the set limit or in case of power failure, HI 504903 will advise the user by sending an SMS to the programmed phone number(s). The message will contain the logger ID and the occurred error, then the user will be also advised with a phone call.

If the HI 504903 does not receive any confirmation of received SMS, it will continue to send messages and call the user.

The operator can also check the system status by calling the HI 504903 GSM supervisor, that will answer with an SMS for each logger. The message will include the operating status (stand-by, logging), any occurred error and the current measured temperature.



Specifications

Model	Range	Resolution	Accuracy
HI 142A(H)	-30.0 to 70.0°C / -22.0 to 158.0°F	0.5°C / 0.5°F	±1.5°C / ±3°F
HI 142B(H)	-10.0 to 30.0°C / 14 to 86°F	0.2°C / 0.4°F	±0.5°C / ±1°F
HI 142C(H)	-30.0 to 10.0°C / -22 to 50°F	0.2°C / 0.4°F	±0.5°C / ±1°F
HI 142D(H)	20.0 to 60.0°C / 68 to 140°F	0.2°C / 0.4°F	±0.5°C / ±1°F
HI 142E(H)	-30.0 to -10.0°C / -22 to 14°F	0.1°C / 0.2°F	±0.3°C / ±0.6°F
HI 142F(H)	20.0 to 40.0°C / 68 to 104°F	0.1°C / 0.2°F	±0.3°C / ±0.6°F
HI 142G(H)	-5.0 to 15.0°C / 23 to 59°F	0.1°C / 0.2°F	±0.3°C / ±0.6°F
HI 142H(H)	10 to 120°C / 50 to 248°F	1°C / 2°F	±2°C / ±4°F

Specifications for all models

Data Logging	up to 7600 samples
Environment	0 to 50°C (32 to 122°F); RH max 95%
Power Supply	10-20 Vdc
Probe	fix, with 1.5 m cable of non-toxic material
Dimensions / Weight	dia 86.5 x h 35 mm (dia 3.4 x h 1.4") / 150 g (5.5 oz.)

Accessories

HI 504903-1	GSM supervisor (dual-band 900/1900 MHz with 115 Vac/12 Vdc power adapter)	HI 710005	115 Vac/12 Vdc power adapter
		HI 710006	230 Vac/12 Vdc power adapter
		HI 92140	Windows® compatible software
HI 504903-2	GSM supervisor (dual-band 900/1800 MHz with 230 Vac/12 Vdc power adapter)		

Ordering Information

HI 142 is supplied complete with instructions.

HI 504903 is supplied complete with configuration software, line termination key, HI 920010 serial cable for PC connection, 12 Vdc power adapter and instructions.