

automatic and can be performed at one or two points at any of the memorized buffers (pH 4.01, 6.86, 7.01, 9.18 and 10.01). Graphic prompts guide the user step-by-step through calibration. This is an important feature which guarantees an accurate calibration and consequently accurate measurements, even by non-specialist operators. In order to save battery power, the meter will turn itself off after ten minutes of non-use. You can also store a value and recall it at a later date, even after switching the meter off. **HI 9024** is supplied with a rugged double-junction pH electrode for measurement of water and soluble material.

**HI 98230**  
**State-of-the-art pH Meter**  
**with Logging & Printing**

**HI 98230** employs the very latest in electro-chemical technology to put at your disposal something more than just a pH meter. **HI 98230** measures, prints and logs the pH and temperature values at an interval most suitable to your application. **HI 98230** will also record up to 100 data sets on a log-on-demand basis. For the first time in the history of pH technology, **HI 98230** operates with "intelligent" electrodes. A **HANNA** instruments'-designed micro-chip encapsulated in the electrode contains all the necessary data for that particular electrode. Once it is connected to the meter, **HI 98230** recognizes the electrode. This feature means that you can personalize electrodes for different applications and eliminate cross-contamination. You will also save time by simply attaching a new electrode without having to recalibrate the meter. The **HANNA** instruments' "intelligent" electrodes are also equipped with an internal temperature sensor. A backlit LCD display, automatic calibration and temperature compensation, menu-driven display, user-selectable parameters and plenty more are offered by this breakthrough instrument. With the **HI 98230**'s password protection, you can rest assured that calibration and important data are not tampered with. The pH range has also been extended from -4.00 to 19.99.



**HI 98230**  
**recognizes**  
**"intelligent"**  
**pH electrodes**

**Specially-Made Food Electrodes**

Choose the pH electrode most suitable to your application from **HANNA** instruments' vast range of food electrodes

**FC 200 Series**

One of the most popular pH electrodes in the world for direct measurement of pH in bread, pasta, dairy products, meat, fruit, marmalades, ice creams, etc.

**FC 200**: standard model

**FC 201**: "intelligent" electrode for **HI 98230**

**FC 202D**: electrode for **HI 99161**

**FC 400**: electrode for meat, with black PVDF body

**FC 230, FC 231 and FC 232D**

Made for measurements in meat, semi-frozen and frozen foodstuffs.

**FC 230**: standard model

**FC 231**: "intelligent" electrode for **HI 98230**

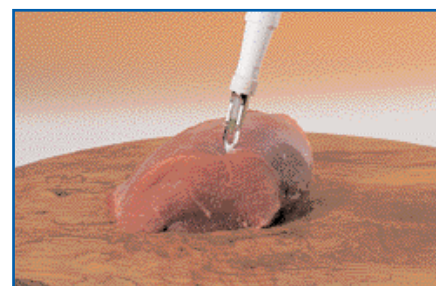
**FC 232D**: electrode for **HI 99163**

**FC 098**

Stainless steel blade for **FC 230** and **FC 231**, 20 mm (3/4") long

**FC 099**

Stainless steel blade for **FC 230**, **FC 231**, **FC 232**, 35 mm (3/8") long



For detailed information about these products, see sections D and E.